



Pre Engineered Railings

 **RINOX**[®]
Engineered in Germany

TWIN RAIL

RAILING SYSTEM

Twin Rail is a design that offers a sleek and modern look for your railing system. It features a double flat bar post that can be mounted on the top or the side of the surface, and can accommodate various types of infill options. Whether you choose glass, pickets, bars, or wire mesh, Twin Rail will enhance the aesthetic and functionality of your space.

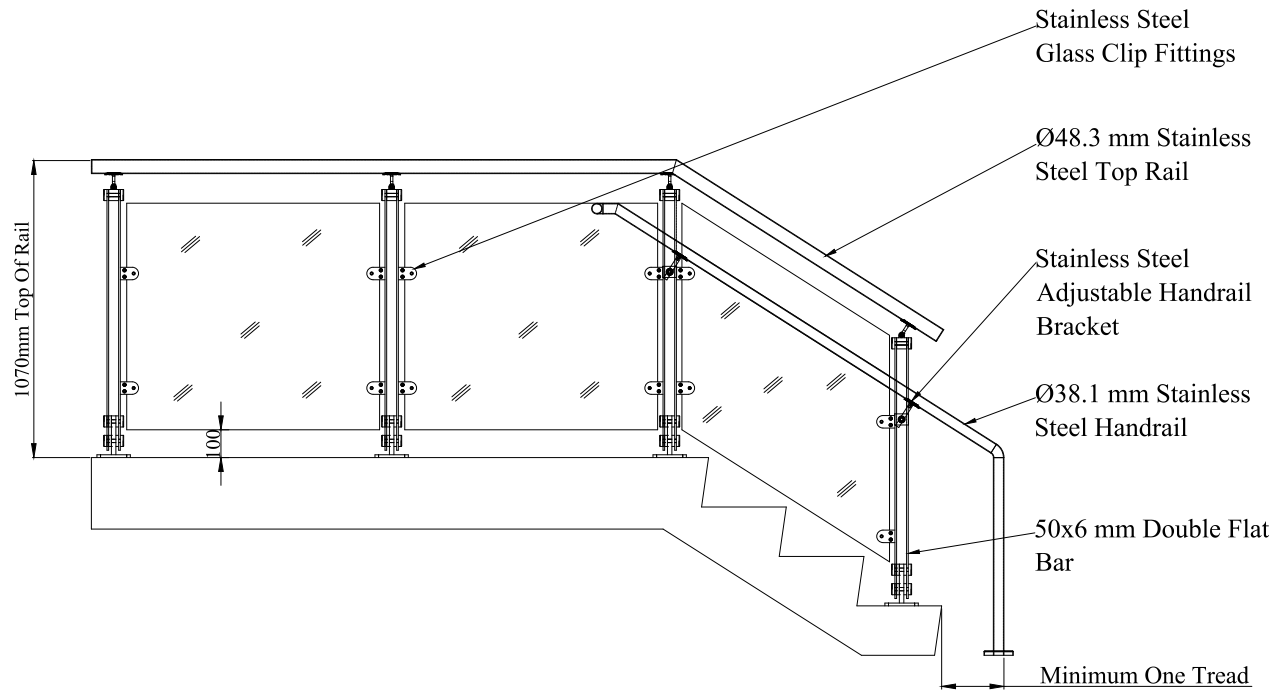


TWIN RAIL RAILING SYSTEM

TECHNICAL DATA	TYPE/SHAPE	MATERIAL	FINISH	STANDARD SPACING / SIZE IN mm (Inch)
POST	Double Flat	304 or 316 stainless steel	#4, #6 Satin or #8 Mirror	1220 mm (4') On Center - Standard
INFILL OPTIONS	Glass with clips	Glass	Clear	10.76 - 12.76 mm (3/8" - 9/16") laminated glass
	Glass with spider			
	Horizontal Bar	304 or 316 stainless steel	#4, #6 Satin or #8 Mirror	Dia. 10 - 16 mm (13/32" - 5/8") hollow or solid
	Vertical Pickets			
	Wire Mesh		Natural	Dia. 5 mm (3/16") - Standard
TOP RAIL / HAND RAIL	Round or Square Tube,	304 or 316 stainless steel	#4, #6 Satin or #8 Mirror	Dia. 48.3 / 38.1 mm (1 ⁷ / ₈ " - 1 ¹ / ₂ ") - Standard Sq. 40x40 mm (1 ⁵ / ₈ " x 1 ⁵ / ₈ ") - Standard
	Round or Square U-Tube			Dia. 42.4 mm (1 ⁷ / ₈ " - 1 ¹ / ₂ ") - Standard Sq. 40x40 mm (1 ⁵ / ₈ " x 1 ⁵ / ₈ ") - Standard

Note: Standards specifies customization or other sizes are also available for that option.

STANDARD LINE DIAGRAM

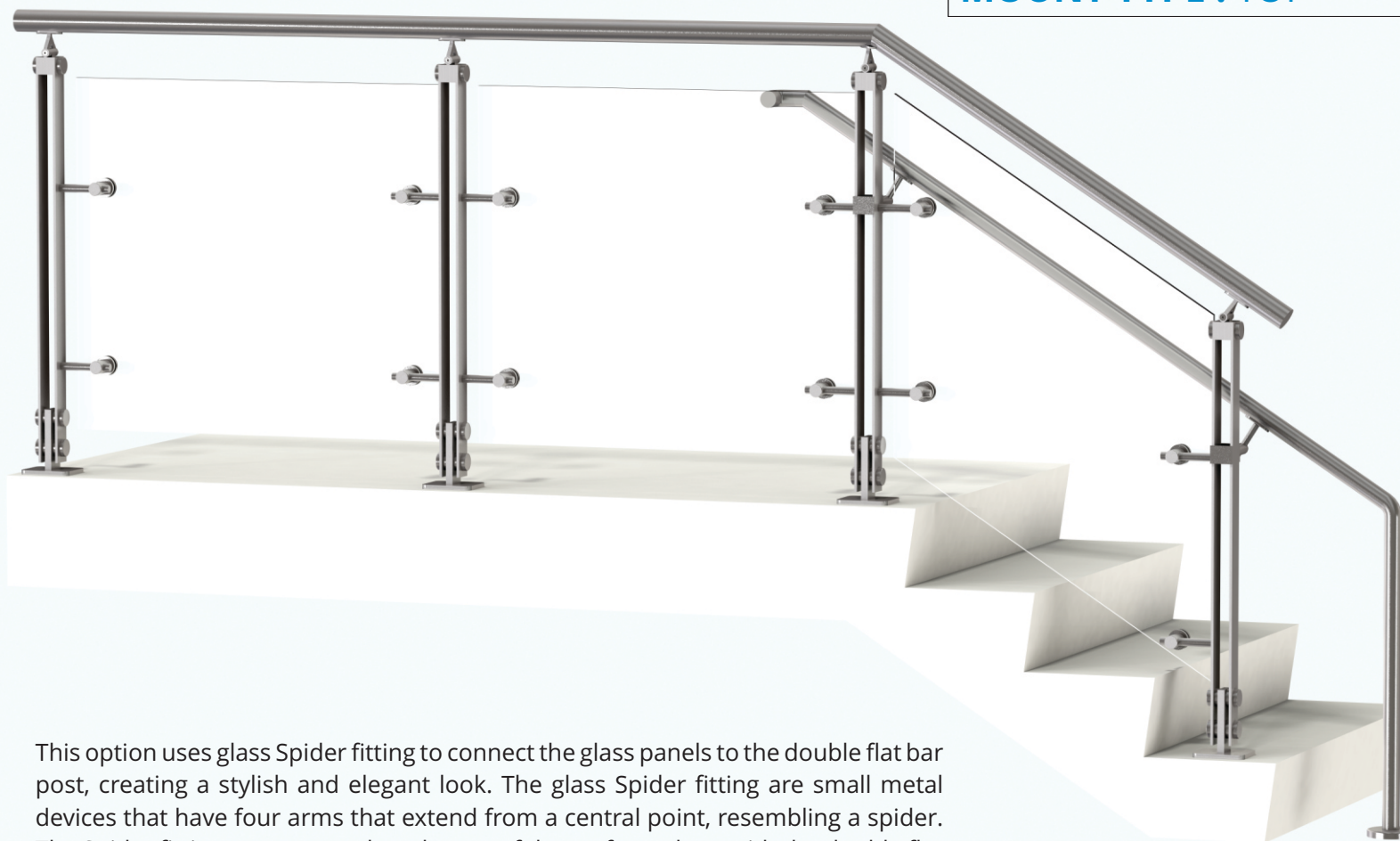


TWIN RAIL RAILING SYSTEM**INFILL OPTION : GLASS WITH CLIPS****MOUNT TYPE : TOP**

This option uses glass clips to hold the glass panels in place, creating a seamless and transparent view. The glass clips are attached to the double flat bar post, which is mounted on the top of the surface. This type of installation is suitable for flat surfaces that can support the weight of the post and the glass.

TWIN RAIL RAILING SYSTEM**INFILL OPTION : GLASS WITH CLIPS****MOUNT TYPE : SIDE**

This option uses glass clips to hold the glass panels in place, creating a seamless and transparent view. The glass clips are attached to the double flat bar post, which is mounted on the side of the surface. This type of installation is suitable for surfaces that have a vertical edge, such as stairs, balconies, or decks.

TWIN RAIL RAILING SYSTEM**INFILL OPTION : GLASS WITH SPIDER****MOUNT TYPE : TOP**

This option uses glass Spider fitting to connect the glass panels to the double flat bar post, creating a stylish and elegant look. The glass Spider fitting are small metal devices that have four arms that extend from a central point, resembling a spider. The Spider fitting are mounted on the top of the surface, along with the double flat bar post. This type of installation is suitable for flat surfaces that can support the weight of the post, the glass, and the Spider fitting.

TWIN RAIL RAILING SYSTEM**INFILL OPTION : GLASS WITH SPIDER****MOUNT TYPE : SIDE**

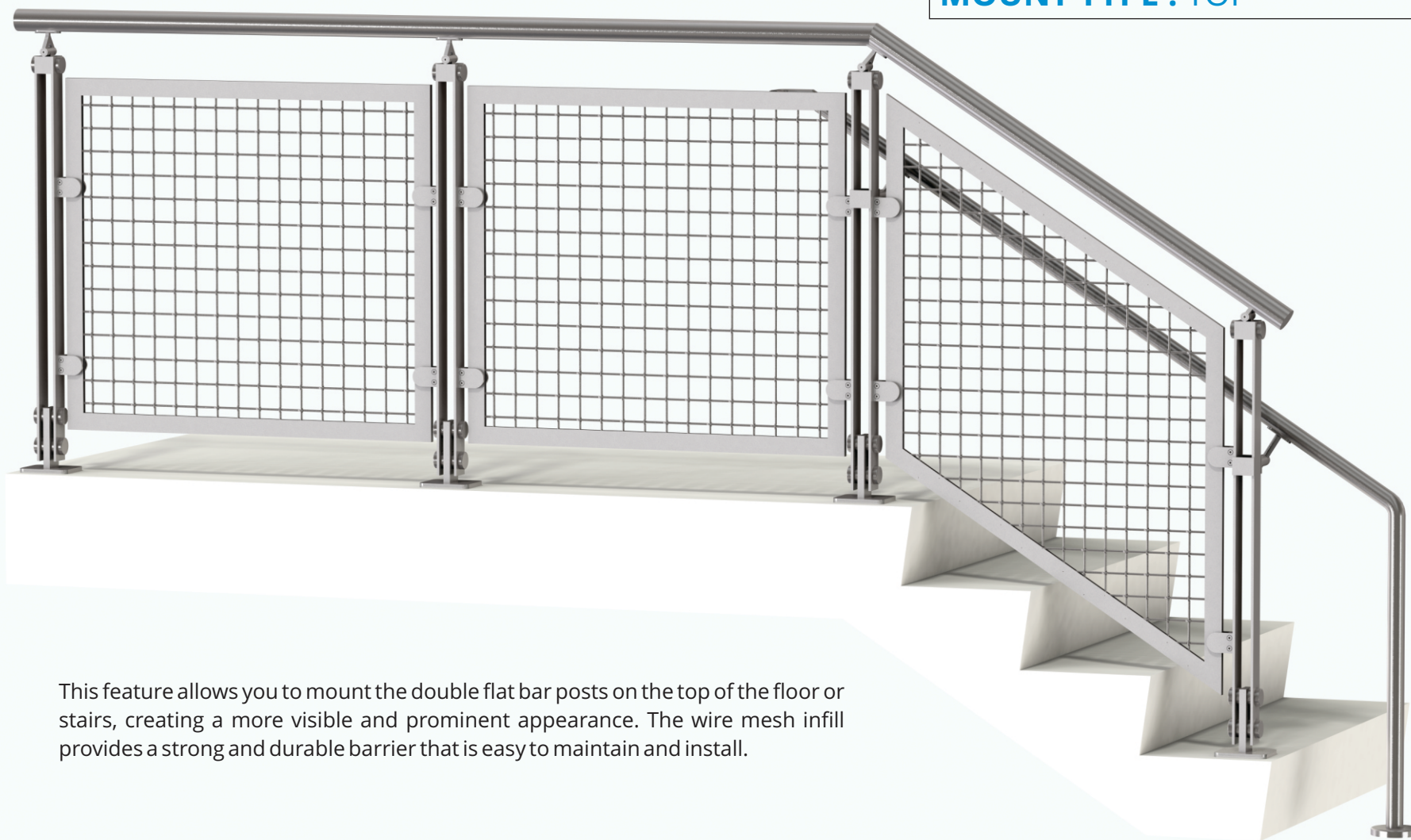
This feature allows you to mount the double flat bar posts on the side of the floor or stairs, creating a clean and minimalistic appearance. The spider fitting in glass infill provides a transparent and modern barrier that allows natural light and views to pass through.

TWIN RAIL RAILING SYSTEM**INFILL OPTION : VERTICAL PICKETS****MOUNT TYPE : TOP**

This feature allows you to mount the double flat bar posts on the top of the floor or stairs, creating a more visible and prominent appearance. The vertical pickets infill provides a classic and elegant barrier that is suitable for any style and decor.

TWIN RAIL RAILING SYSTEM**INFILL OPTION : VERTICAL PICKETS****MOUNT TYPE : SIDE**

This feature allows you to mount the double flat bar posts on the side of the floor or stairs, creating a clean and minimalistic appearance. The vertical pickets infill provides a classic and elegant barrier that is suitable for any style and decor.

TWIN RAIL RAILING SYSTEM**INFILL OPTION : WIRE MESH****MOUNT TYPE : TOP**

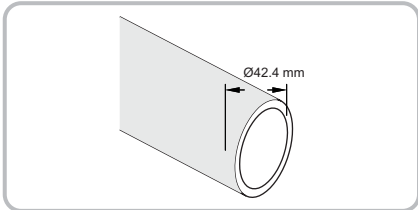
This feature allows you to mount the double flat bar posts on the top of the floor or stairs, creating a more visible and prominent appearance. The wire mesh infill provides a strong and durable barrier that is easy to maintain and install.

TWIN RAIL RAILING SYSTEM**INFILL OPTION : WIRE MESH****MOUNT TYPE : SIDE**

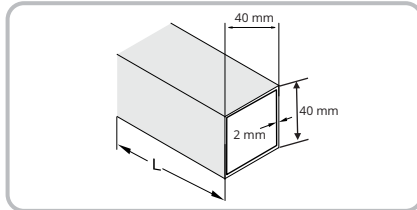
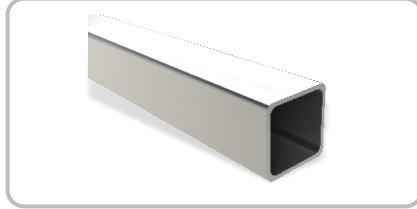
This feature allows you to mount the double flat bar posts on the side of the floor or stairs, creating a clean and minimalistic appearance. The wire mesh infill provides a strong and durable barrier that is easy to maintain and install.

TOP RAIL ATTACHMENTS

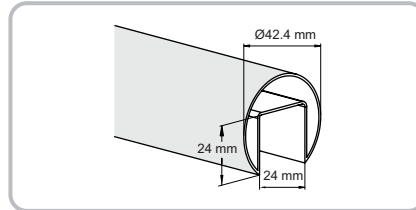
ROUND TUBE



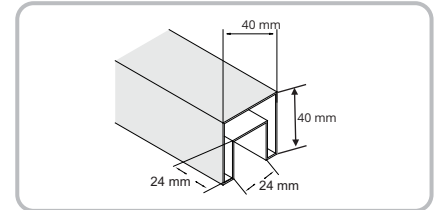
SQUARE TUBE



ROUND U TUBE

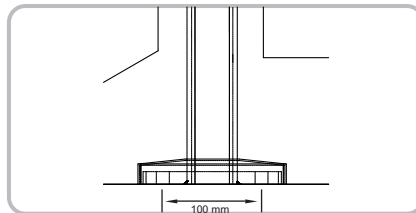


SQUARE U TUBE

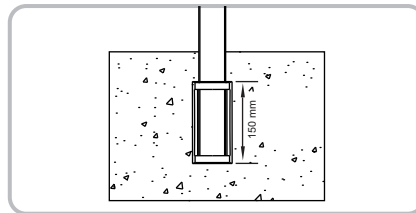


BASE ATTACHMENTS

TOP MOUNT



SIDE MOUNT



RINOX ENGINEERING

2, Giaspura Road, Dhandari Kalan, Ludhiana, Punjab India - 141010

 |  +91-76008-20000  sales@rinox.in  www.RailingFactory.com | www.rinox.in

