



Pre Engineered Railings

 **RINOX**[®]
Engineered in Germany

BRAWNY

RAILING SYSTEM

Brawny is a design that offers a sturdy and robust look for your railing system. It features a square post that can be mounted on the top or the side of the surface, and can accommodate various types of infill options. Whether you choose glass, pickets, bars, or wire mesh, Brawny will provide strength and durability to your space.

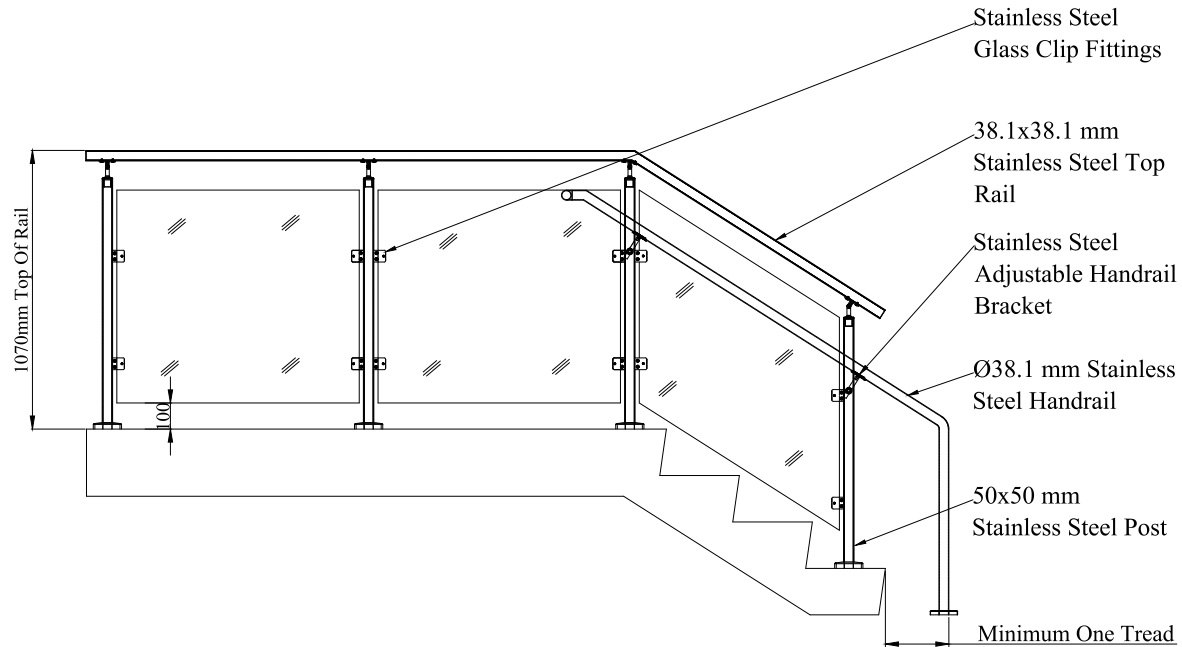


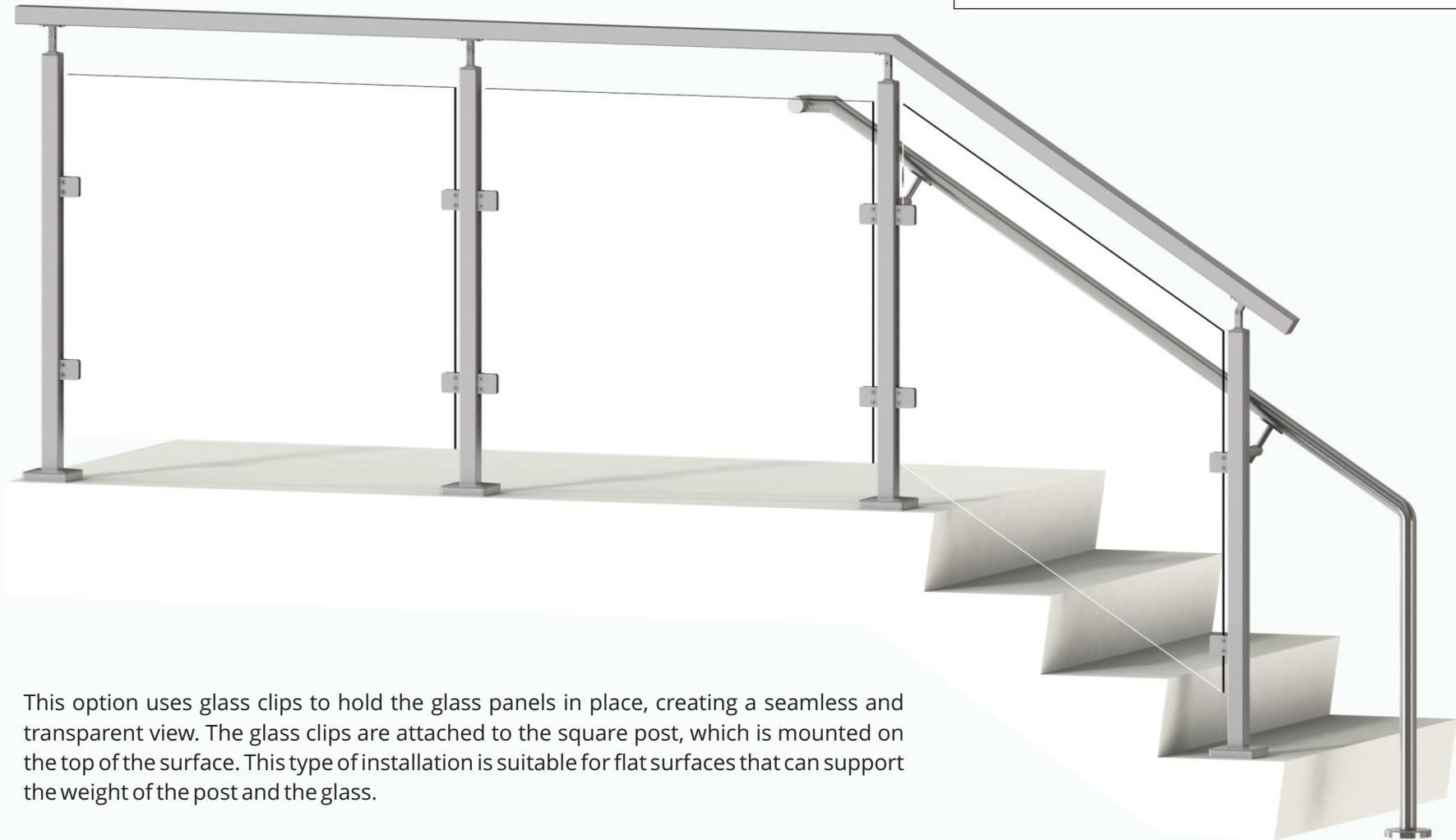
BRAWNY RAILING SYSTEM

| TECHNICAL DATA | TYPE/SHAPE | MATERIAL | FINISH | STANDARD SPACING / SIZE IN mm (Inch) |
|-----------------------------|------------------------------|----------------------------|---------------------------|---|
| POST | Square | 304 or 316 stainless steel | #4, #6 Satin or #8 Mirror | 1220 mm (4') On Center - Standard |
| INFILL OPTIONS | Glass with clips | Glass | Clear | 10.76 - 12.76 mm (3/8" - 9/16") laminated glass |
| | Glass with spider | | | |
| | Horizontal Bar | 304 or 316 stainless steel | #4, #6 Satin or #8 Mirror | Dia. 10 - 16 mm (13/32" - 5/8") hollow or solid |
| | Vertical Pickets | | | |
| | Cable | | Natural | Dia. 4 - 6 mm (3/16" - 1/4") |
| Wire Mesh | Dia. 5 mm (3/16") - Standard | | | |
| TOP RAIL / HAND RAIL | Round or Square Tube | 304 or 316 stainless steel | #4, #6 Satin or #8 Mirror | Dia. 48.3 / 38.1 mm (1 ⁷ / ₈ " - 1 ¹ / ₂ ") - Standard Sq. 40x40 mm (1 ⁵ / ₈ " x 1 ⁵ / ₈ ") - Standard |
| | Round or Square U-Tube | | | Dia. 42.4 mm (1 ² / ₂ " - 1 ¹ / ₂ ") - Standard Sq. 40x40 mm (1 ⁵ / ₈ " x 1 ⁵ / ₈ ") - Standard |

Note: Standards specifies customization or other sizes are also available for that option.

STANDARD LINE DIAGRAM

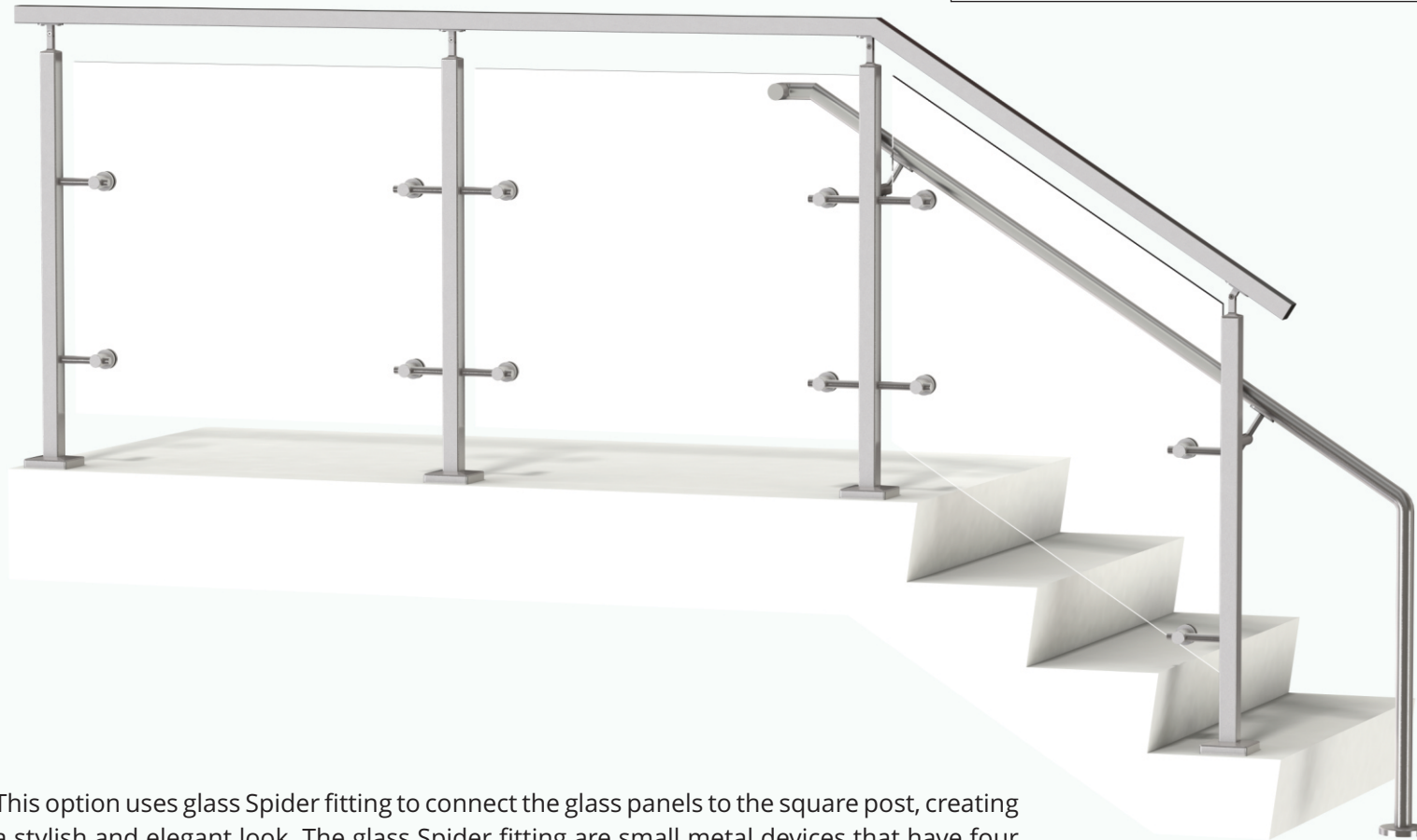


BRAWNY RAILING SYSTEM**INFILL OPTION : GLASS WITH CLIPS****MOUNT TYPE : TOP**

This option uses glass clips to hold the glass panels in place, creating a seamless and transparent view. The glass clips are attached to the square post, which is mounted on the top of the surface. This type of installation is suitable for flat surfaces that can support the weight of the post and the glass.

BRAWNY RAILING SYSTEM**INFILL OPTION : GLASS WITH CLIPS****MOUNT TYPE : SIDE**

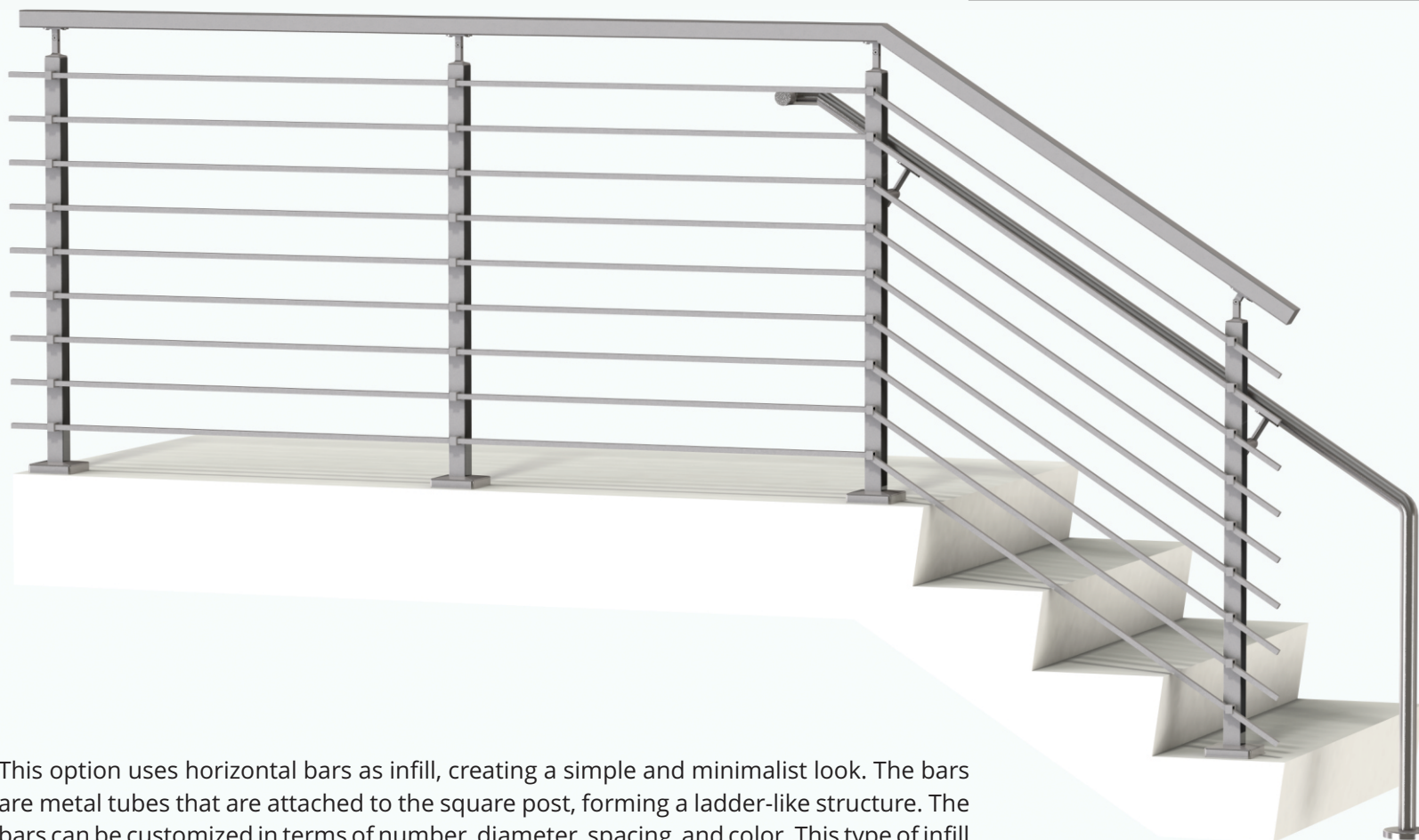
This option uses glass clips to hold the glass panels in place, creating a seamless and transparent view. The glass clips are attached to the square post, which is mounted on the side of the surface. This type of installation is suitable for surfaces that have a vertical edge, such as stairs, balconies, or decks.

BRAWNY RAILING SYSTEM**INFILL OPTION : GLASS WITH SPIDER****MOUNT TYPE : TOP**

This option uses glass Spider fitting to connect the glass panels to the square post, creating a stylish and elegant look. The glass Spider fitting are small metal devices that have four arms that extend from a central point, resembling a spider. The Spider fitting are mounted on the top of the surface, along with the square post. This type of installation is suitable for flat surfaces that can support the weight of the post, the glass, and the Spider fitting.

BRAWNY RAILING SYSTEM**INFILL OPTION : GLASS WITH SPIDER****MOUNT TYPE : SIDE**

This option uses glass Spider fitting to connect the glass panels to the square post, creating a stylish and elegant look. The glass Spider fitting are small metal devices that have four arms that extend from a central point, resembling a spider. The Spider fitting are mounted on the side of the surface, along with the square post. This type of installation is suitable for surfaces that have a vertical edge, such as stairs, balconies, or decks.

BRAWNY RAILING SYSTEM**INFILL OPTION : HORIZONTAL BAR****MOUNT TYPE : TOP**

This option uses horizontal bars as infill, creating a simple and minimalist look. The bars are metal tubes that are attached to the square post, forming a ladder-like structure. The bars can be customized in terms of number, diameter, spacing, and color. This type of infill is suitable for any surface and provides stability and durability.

BRAWNY RAILING SYSTEM**INFILL OPTION : HORIZONTAL BAR****MOUNT TYPE : SIDE**

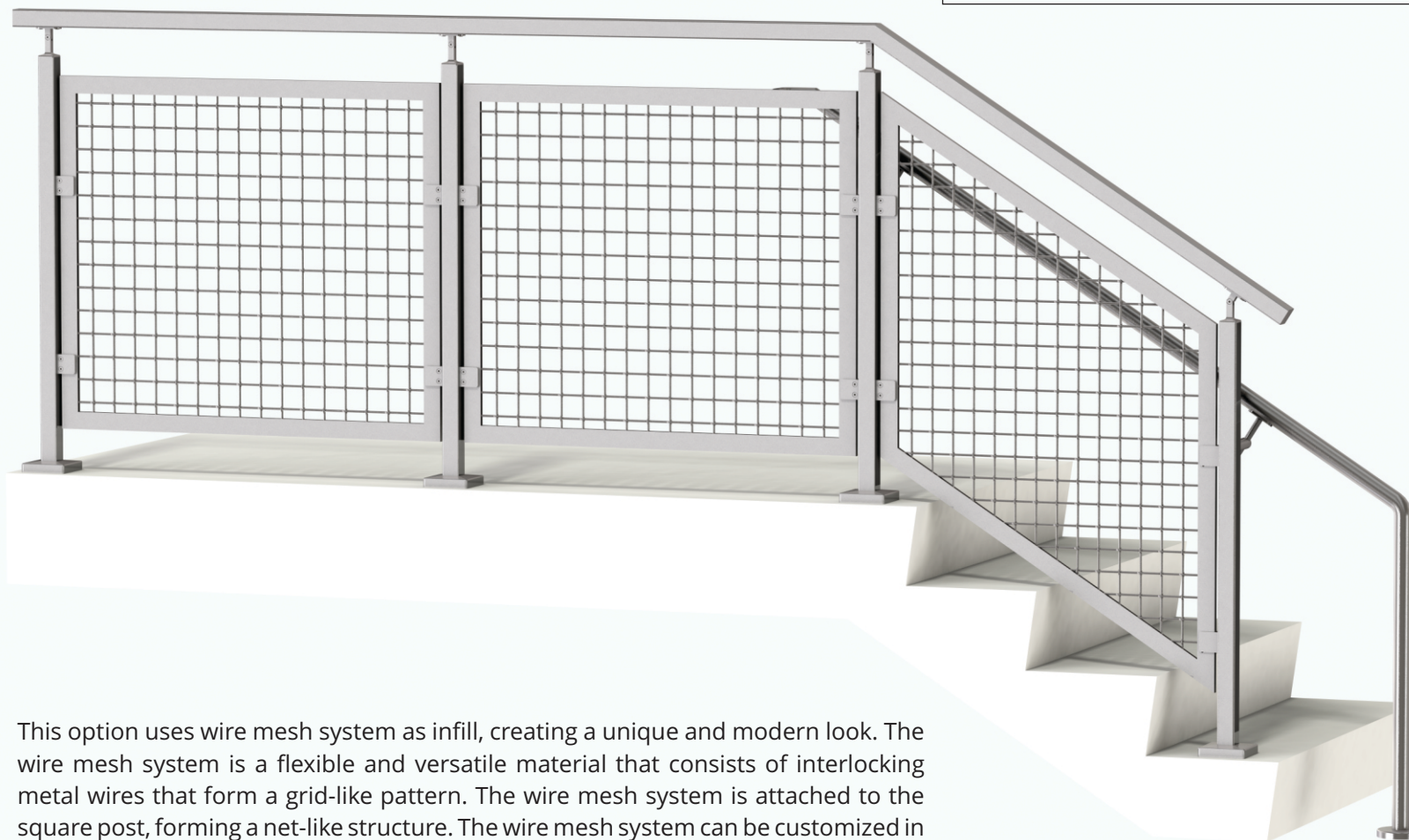
This infill option consists of horizontal bars that run parallel to the floor, creating a strong and simple appearance. The horizontal bars are spaced evenly and securely attached to the square posts. This option is ideal for those who want a reliable and easy-to-install railing system that can withstand heavy loads and impacts.

BRAWNY RAILING SYSTEM**INFILL OPTION : VERTICAL PICKETS****MOUNT TYPE : TOP**

This option uses vertical pickets as infill, creating a classic and traditional look. The pickets are metal rods that are attached to the square post, forming a fence-like structure. The pickets can be customized in terms of height, width, spacing, and color. This type of infill is suitable for any surface and provides safety and security.

BRAWNY RAILING SYSTEM**INFILL OPTION : VERTICAL PICKETS****MOUNT TYPE : SIDE**

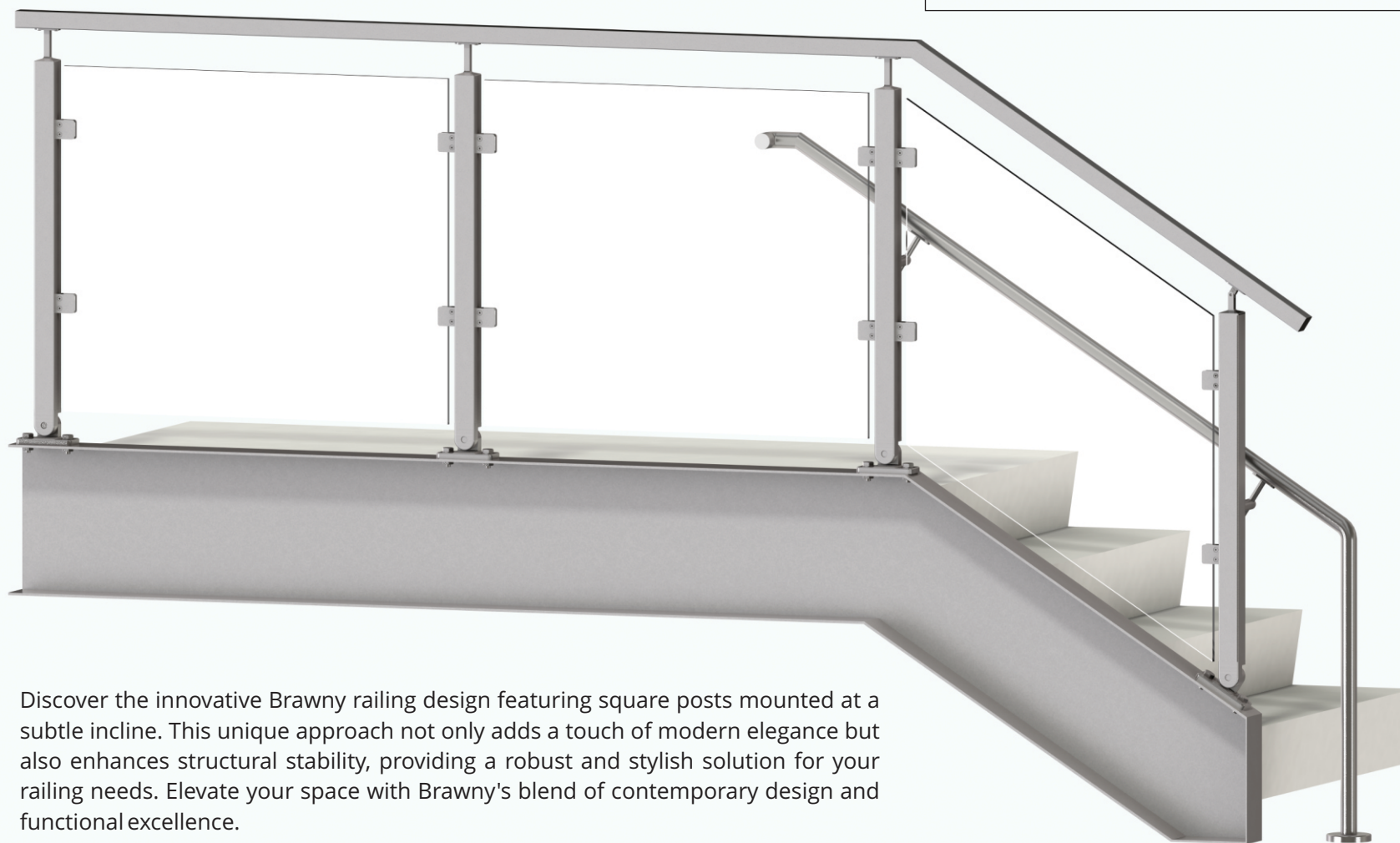
This infill option consists of vertical pickets that run perpendicular to the floor, creating a classic and graceful appearance. The vertical pickets are spaced evenly and securely attached to the square posts. This option is ideal for those who want a traditional and refined railing system that can provide safety and privacy.

BRAWNY RAILING SYSTEM**INFILL OPTION : WIRE MESH****MOUNT TYPE : TOP**

This option uses wire mesh system as infill, creating a unique and modern look. The wire mesh system is a flexible and versatile material that consists of interlocking metal wires that form a grid-like pattern. The wire mesh system is attached to the square post, forming a net-like structure. The wire mesh system can be customized in terms of size, shape, color, and design. This type of infill is suitable for any surface and provides flexibility and creativity.

BRAWNY RAILING SYSTEM**INFILL OPTION : WIRE MESH****MOUNT TYPE : SIDE**

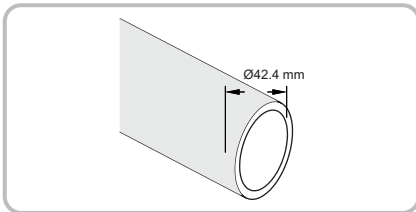
This infill option consists of wire mesh that covers the entire area between the square posts, creating a rustic and industrial appearance. The wire mesh is made of high-quality stainless steel and securely attached to the square posts. This option is ideal for those who want a versatile and functional railing system that can offer ventilation and durability.

BRAWNY RAILING SYSTEM**INFILL OPTION : GLASS WITH CLIPS****MOUNT TYPE : INCLINED**

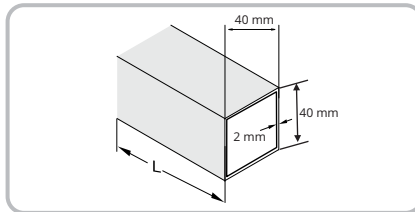
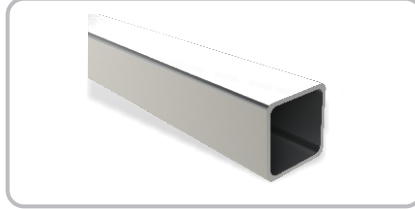
Discover the innovative Brawny railing design featuring square posts mounted at a subtle incline. This unique approach not only adds a touch of modern elegance but also enhances structural stability, providing a robust and stylish solution for your railing needs. Elevate your space with Brawny's blend of contemporary design and functional excellence.

TOP RAIL ATTACHMENTS

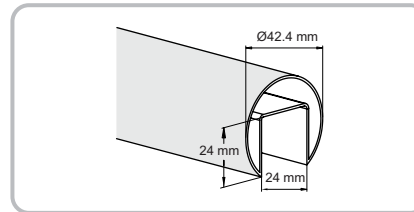
ROUND TUBE



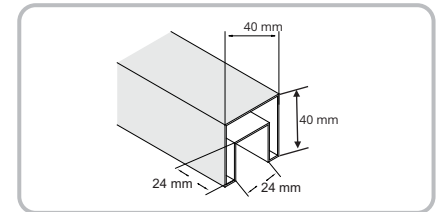
SQUARE TUBE



ROUND U TUBE

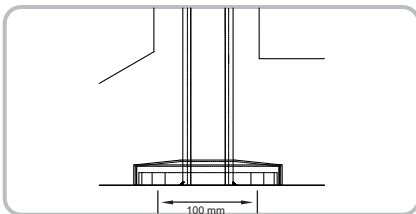
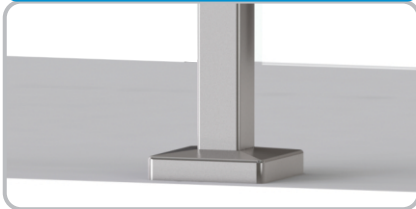


SQUARE U TUBE

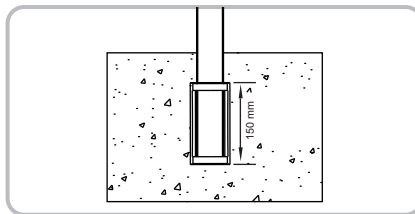
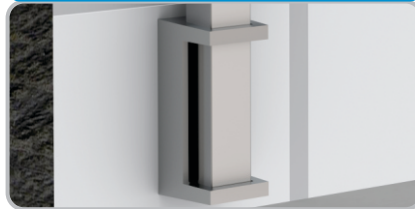


BASE ATTACHMENTS

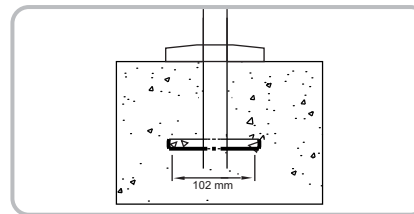
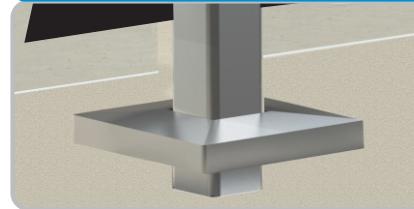
TOP MOUNT



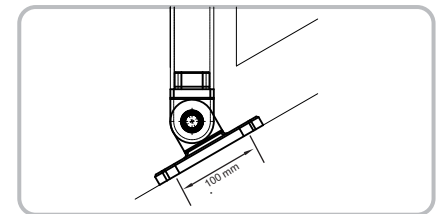
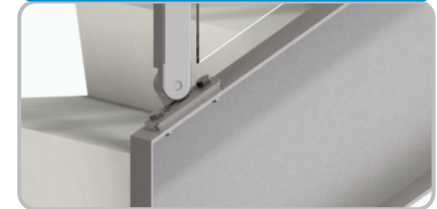
FASCIA MOUNT



CORE MOUNT



INCLINED



RINOX ENGINEERING

2, Giaspura Road, Dhandari Kalan, Ludhiana, Punjab India - 141010

 |  +91-76008-20000  sales@rinox.in  www.RailingFactory.com | www.rinox.in

